



Total Formwork Solutions Provider!
kumkang Kind
Aluminum Formwork

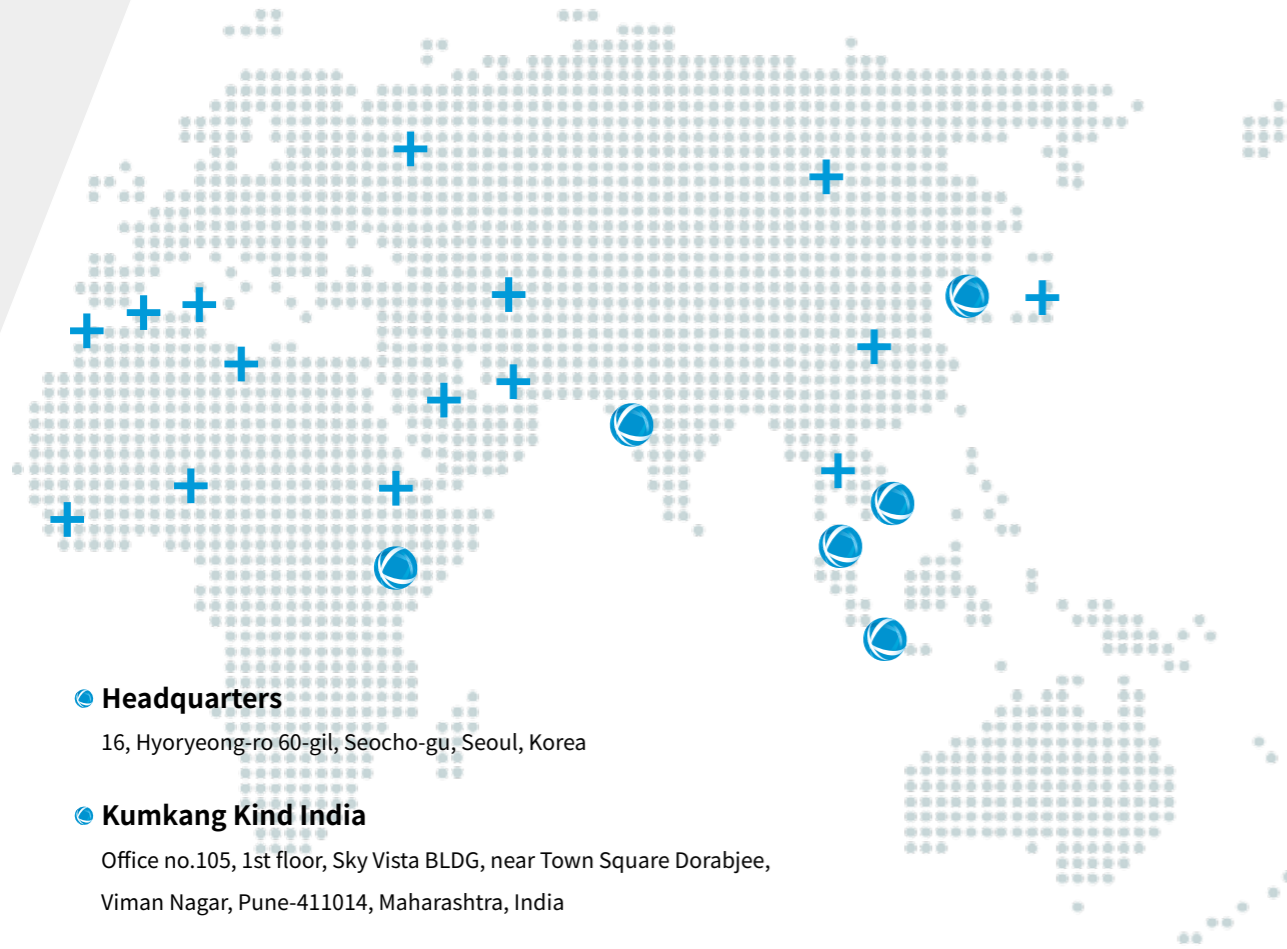


kumkang Kind

Global Kumkang Kind

Kumkang Kind is proud to have its products in more than 30 countries around the world. With the globalization, we have set up a global network: Kumkang Kind America, Kumkang Kind Malaysia, Kumkang Kind Vietnam, Kumkang Kind India, Kumkang Kind East Africa and Kumkang Kind Indonesia are acting as Kumkang Kind's representatives in their respective regions. As Kumkang Kind has established several agents and distributors, wherever you go, you will always find our products nearby.

Overseas Branch Offices



Headquarters

16, Hyoryeong-ro 60-gil, Seocho-gu, Seoul, Korea

Kumkang Kind India

Office no.105, 1st floor, Sky Vista BLDG, near Town Square Dorabjee, Viman Nagar, Pune-411014, Maharashtra, India

Kumkang Kind Malaysia

B-9-01, Block B, Oasis Square No.2, Jalan PJU 1A/7A Ara Damansara 47301 Petaling Jaya Selangor Darul Ehsan, Malaysia

Kumkang Kind Vietnam

9th, Beautiful Saigon BLDG., 02 Nguyen Khac Vien St, District 7, Ho Chi Mihn City, Vietnam

Kumkang Kind East Africa

Office 15A, Mezzanine 2, The Mirage, Chiromo Rd, Westlands, Nairobi, Kenya

Kumkang Kind Indonesia

Gedung Wisma Slipi Unit 801, Jl..Let. Jend. S. Parman Kav. 12 Jakarta, Indonesia

Kumkang America

1215 W. Imperial HWY., Ste 216 Brea, CA 92812 USA

Production Plants



+ Eumseong #1 Factory (Production of aluminum formwork)

505, Yonggwang-ro, Eumseong-eup, Eumseong-gun, Chungcheongbuk-do, Korea

+ Eumseong #2 Factory (Aluminum Recycling and Extruding)

1994, Daegeum-ro, Saenggeuk-myeon, Eumseong-gun, Chungcheongbuk-do, Korea

+ Jincheon #1 Factory (Production of aluminum formwork)

515, Jingwang-ro, Iwol-myeon, Jincheon-gun, Chungcheongbuk-do, Korea

+ Jincheon #1 Factory (Production of aluminum formwork)

27-29, Sincheokseo-gil, Iwol-myeon, Jincheon-gun, Chungcheongbuk-do, Korea

+ Nilai Factory in Malaysia (Production of aluminum formwork)

Lot 119-120, Jalan Permata 1/4, Arab Malaysian Industrial Park, 71800 Nilai, Negeri Sembilan Darul Khusus, Malaysia

+ Changnyeong Factory (Production of climbing formwork and infrastructure)

149-16, Gwanggyemaoul-gil, Gyeseong-myeon, Changnyeong-gun, Gyeongsangnam-do, Korea

+ Eonyang Factory (Production of steel pipe)

359, Bangudae-ro, Samnam-myeon, Ulju-gun, Ulsan, Korea

Kumkang Kind History

00's

- 03. 04 Completion of Jincheon #1 Factory
- 03. 12 Obtained ISO 9001 Certificate
- 05. 10 Establishment of Research and Development department
- 06. 05 Completion of Jincheon #2 Factory
- 06. 12 Completion of Eumseong Factory
- 07. 09 Establishment of Kumkang Kind (M) Sdn. Bhd as a subsidiary in Malaysia
- 08. 06 Obtained KR [The Korean Register of Shipping] Certificate
- 09. 10 Completion of Nilai Factory in Malaysia
- 09. 11 Achieved \$30 million in exports

10's

- 10. 01 Establishment of Kumkang Kind America
- 10. 06 Establishment of Kumkang Kind Vietnam
- 11. 11 Achieved \$50 million in exports
- 12. 01 Changed Jincheon #2 Factory into Jincheon Modular factory
- 12. 09 Completion of Eumseong #2 factory
- 12. 10 Establishment of Kumkang Kind India
- 12. 12 Achieved US\$ 70 million in exports
- 13. 01 Merged Kumkang Fostem Inc.
- 14. 12 Achieved \$100 million in exports
- 15. 03 Completion of Changnyeong Factory
- 15. 08 Completion of Cheonan Modular Factory
- 17. 02 Establishment of Kumkang Kind East Africa
- 17. 03 Establishment of Kumkang Kind Indonesia
- 17. 10 Relocated Modular factory to Changnyeong Factory

90's

- 90. 01 Completion of Eonyang factory
- 92. 01 Completion of Busan factory
- 92. 05 Obtained KS certificate [pipes for ordinary, pressure and structural]
- 92. 07 Obtained quality certificate from Japanese scaffolding association
- 92. 11 Achieved \$10 million in exports
- 93. 02 Obtained JIS Certificate [structural pipe]
- 99. 05 Obtained ISO 9002 Certificate

70's

- 79. 08 Establishment of Kumkang Kind Co., Ltd.

80's

- 87. 09 Obtained KS certificate [panel form]
- 88. 09 Listed on the Korean Stock Exchange
- 89. 06 Completion of Banwol factory



Formwork System

The most important aspect of a successful structural construction is the formwork system. Kumkang Kind will always offer you the most trustful, safe, and up-to-date formwork system technology available on the market.

Kumkang Kind formwork system is based on worldwide field experience and accumulated technical know-hows. Whatever customers need, we will always fulfill their demands with the most appropriate system. With our R&D department continuously researching for newer and better products, we will maintain our position as the leader of formwork system against our competitors.





K-Al formwork

Kumkang Aluminum formwork system

Megapolis_Pune, India

Our Kumkang Aluminum Formwork is made of high strength aluminum extrusion which, compared with steel formwork, allows a large but lightweight panels. Our formwork will not only achieve better concrete finishing but also allow a faster construction.

Quality Improvement



- Our Kumkang Aluminum Formwork produces an unbeatable concrete finishing which does not require any plastering and eliminate grinding task due to joints created by panels. Furthermore, our engineers will design the staircase formwork so that the concrete will be poured simultaneously on the wall, slab, column and beam.

Cost Reducer



- As our aluminum formwork allows an average of 4~7 days cycle, it considerably reduces the construction period. Reducing construction period will directly reduce the construction cost. Furthermore, non-structural wall can also be done with our aluminum formwork which will reduce labour time and cost.

Time Saver



- The Kumkang Aluminum Formwork system allows a single pour of wall, beam, column, slab and staircases. Furthermore, our prop-head system will allow to dismantle the slab panels without removing the props. Thus, 4~7 days cycle is no longer a dream but a reality.

Safety Provider



- Compared with the conventional method, our formwork system will allow a large working area for jobsite workers (fewer props). Furthermore, through the supply of external working platform, jobsite workers will feel much safer and increase their efficiency.

Eco Friendly



- One of the best advantages of the aluminum formwork is repetition. While the conventional formwork must be thrown away after 5~10 repetitions and steel formwork after a maximum repetition of 50, the aluminum panels can last for over 300 repetitions. Furthermore, after 300 repetitions, the panels can be recycled. Thus, no harm is created to the environment and produce less site wastages.

P J T Megapolis
Builder Kumar properties & ABIL
Location Pune, India
Type Multipurpose Building
System K-Al formwork

Advantages

The most important aspect of a successful structural construction is the formwork system.

Kumkang Kind will always offer you the most trustful, secure, efficient, and cutting edge of formwork system technology available on the market.

+ Speed

- Due to its easiness of assembly, our Kumkang Aluminum Formwork allows an average of 4~7 days cycle compared to 14~30 days cycle with the conventional method.

+ Quality

- With a smooth surface and accurate dimension of panels, there is no requirement of plastering or remedial work after concrete casting.

+ Safety

- No need to remove props and prop heads when dismantling slab panels.

+ Easy assembly

- No need for skilled workers nor carpenters.

+ All-in-one system

- With our Kumkang Aluminum Formwork, shoring and external working platforms are also supplied.

+ Mobility

- The formwork panels will be transferred manually to the next level through a slab transfer box; thus, the crane can be used for other tasks.

+ Freedom of design & jobsite planning

- Unlike tunnel for table formwork, Kumkang Kind's Aluminum Formwork is a "modular" formwork; there is no constraint on any architectural or structural design.

+ Durability

- Manufactured through a state of art technology with an aluminum alloy extrusion, our formwork can be repeated over 300 times.



Special Features

Construction Method	Application			
	Single Storey (Terrace or Link Houses)	Double(2) Storey (Terrace or Link Houses)	Three(3) to Six(6) Storey (Apartments or Buildings)	High Rise (Buildings or Apartments)
Traditional Bricks	The most common. Slow construction and labor intensive	Usually not acceptable without concrete beam	Structurally not suitable Requires concrete structural elements	Structurally not suitable
Concrete Frame (Columns, Beams & Slabs) with Brick or Block infill	Most commonly used where bricks/blocks alone are not acceptable. Slow method	Most commonly used method, slow & costly compared to system	Traditionally used method worldwide. Slow & costly. Remains the method of choice for small builders, but losing out on large-scale projects to new systems	
Precast / Prefabs Concrete	Suitable for large projects. High initial costs and slow start up for precast / prefab plant. Transport and lifting costs are inefficient compared to cast in-situ system			Careful supervision of construction is required. Noted for rampant instability of joints
Cast in-situ concrete: Heavy Shuttering system	Not suitable - requires too much labor & time to move equipment from one house to another		Suitability increases in proportion to height of building & number of units. Not suitable for less than 250 units. Resulting in efficiency loss	
Kumkang Kind Aluminum Formwork System	Efficient & Cost effective than any of the above methods. Kumkang Kind Aluminum Formwork System is lightweight, hand-held shuttering, flexible, adaptable, faster & environmentally friendly			

Characteristics	Formwork Type				
	Hard Held Formwork	Tunnel Formwork	Table Formwork	Traditional Formwork	Kumkang Kind Al. Formwork
No cranes or other heavy equipment required	✓				✓
Allows to pour wall, slab, beam, column and staircase in 1 single concrete pour		✓			✓
Dismantle slab panels without removing props.					✓
Can form concrete columns and beams together	✓			✓	✓
NO Skilled labor required	✓				✓
Suitable for single (1) or two (2) storey buildings		✓	✓	✓	✓
Suitable for high-rise buildings				✓	✓
Formwork equipment adapts to different designs					✓
Able to form all concrete elements				✓	✓
Lowest formwork to forming area ratio					✓
Respects all architectural and structural requirements of the client, without modifications.	✓			✓	✓
Self correction feature providing unmatched forming accuracy	✓				✓
Environmentally friendly - no huge debris, no messy disposals					✓

Specification	Aluminum A6061-T6		
Material	List	Unit	Combined Aluminum (A6061-T6)
	Specific gravity	-	2.7
	Allowable bending stress	kg/cm ²	1,250
	Young's modulus	kg/cm ²	7.0 x 10 ⁵
Composition	Inner wall panel	Slab corner & Beam	
	Slab panel & prop	In-out corner & Hunch	
	Accessory	Flat-tie, PVC sleeve, round pin, wedge pin	
Normal module	Wall panel	600mm x Wall height (2,300 or 2,450) x 63.5 thk	
	Slab panel	600mm x 1,200 x 63.5 thk	

Unrivaled manufacturing capacity

Kumkang Kind manufactures the Aluminum Formwork System both in over a 190,000 m² facility located in Eumseong and a 85,000 m² facility located in Jincheon, Korea as well as a 24,282 m² facility in Nilai, Malaysia.

We use the most advanced automated system, skilled labors and the latest computer technology to manufacture the best aluminum formwork system at a competitive price.

Manufacturing Facilities



Eumseong #1 Factory in Korea



Jincheon #2 Factory in Korea



Changnyeong Factory in Korea



Eumseong #2 Factory in Korea

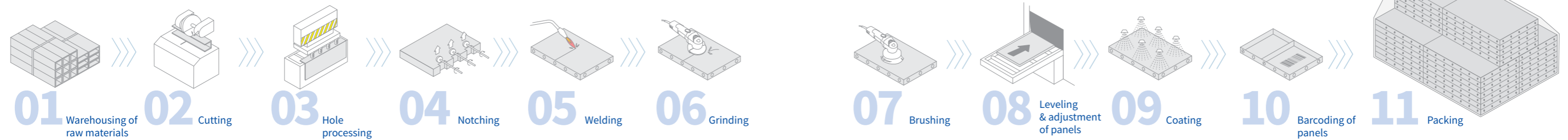


Jincheon #1 Factory in Korea



Nilai Factory in Malaysia

Manufacturing Process



Friction Stir Welding (FSW)

+ Technological background

- Developed in 1991 in Cambridge, United Kingdom, this welding technology applies high pressure between 2 plates and welds them through the heat caused by the friction.
- As it is a joining technology on a solid state (low heat input), compared to the traditional welding method, FSW is environment-friendly, minimizing residual stress and strain.
- Not only FSW allows aluminum welding, but it also allows bimetallic welding such as aluminum/magnesium, alloy steel and lightweight alloy.
- Technology used in aerospace, rail, automotive, marine, and etc. FSW is being used for aluminum formwork since 2015 in Korea.

+ Welding strength

ITEM	Test result based on welding type			Raw material A6061-T6
	Manual welding	Robot welding	FSW	
Tensile Strength (kgf)	900 ~ 1,470	1,770 ~ 2,000	2,600 ~ 3,800	5700
Compared with Raw material	26%	35%	67%	100%

+ Advantages of FSW

- As a solid state process it can be applied to all the major aluminium alloys and avoids problems of hot cracking, porosity, element loss and etc. common to aluminium fusion welding processes.
- Bimetallic (aluminum/magnesium) welding is possible. [bimetallic: different metallic properties]
- No shielding gas or filler wire is required for aluminium alloys
- Excellent mechanical properties, competing strongly with welds made by other processes
- The absence of fusion removes much of the thermal contraction associated with solidification and cooling, leading to significant reductions in distortion
- Workplace friendly: there are no ultraviolet or electromagnetic radiation hazards as the absence of an arc removes these hazards from the process; the process is no noisier than a milling machine of similar power, and generates virtually zero spatter, fume and other pollutants
- As a mechanised process, FSW does not rely on specialised welding skills; indeed manual intervention is seldom required

Aluminum Recycling & Extrusion

Since our establishment in 1979, Kumkang Kind, a manufacturer of steel pipes, formwork system, and modular cordination system has been playing an important role in the development of the South Korea economy and a variety of industries. With a belief in ethical management, the company takes seriously the responsibility toward society and contribution to its well-being.

Recycling is a core business operation in the aluminum formwork industry. The aluminum industry is highly dependant on the global economic cycle. Thus, depending on the economic condition, it becomes extremely difficult to procure raw materials (billet in either cut lengths or logs or scrap). Without billet, it is impossible to have extrusions which will directly affect the production and delivery of aluminum formwork. Thus, Kumkang Kind has newly invested in a billet casting facility in 2015. This facility allows Kumkang Kind to be self-sufficient and procure aluminum in either ingot or scrap form. Our new business will diversify our aluminum supply base and avoid any delays in delivery to our clients.



Quality guarantee and unsurpassed support

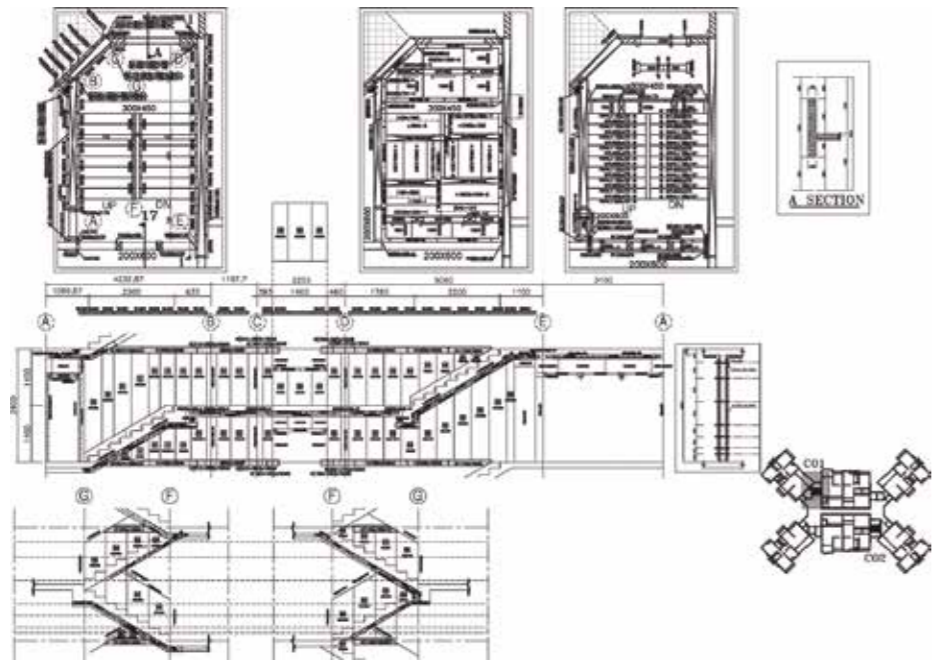
Listening to your needs and providing solutions have been the hallmark of our business since day one. We design products that meet your requirements and demands, not ours. Special applications and custom design are a challenge, not a problem. That's why we lead the industry in developing solutions through new designs.

Kumkang Kind_Seoul Office
Korea

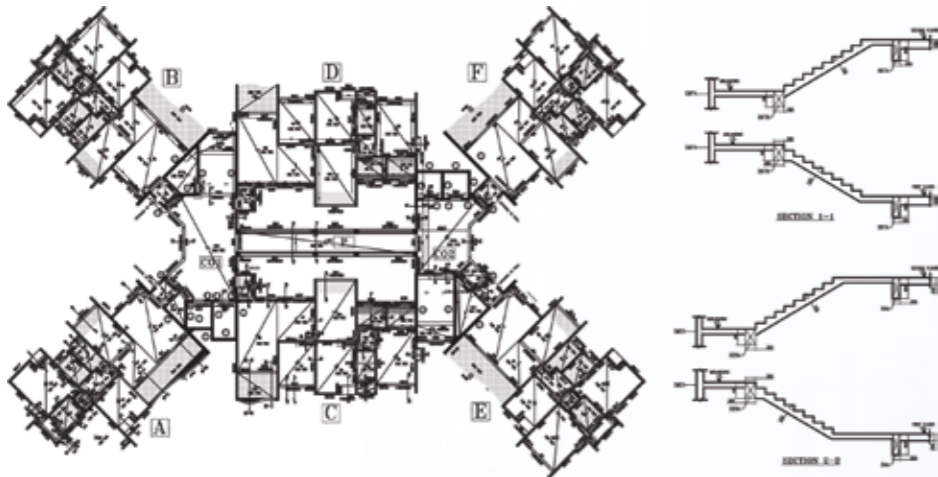
Technical Support

Kumkang Kind offers a wide variety of services, from Aluminum Formwork CAD design to consulting services with an emphasis on commercial and residential construction.

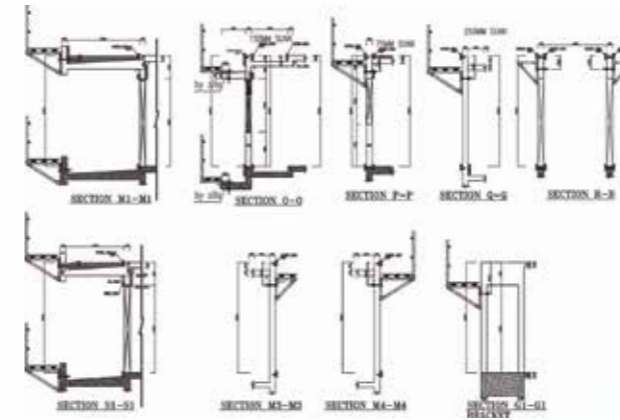
+ Staircase Setting Layout



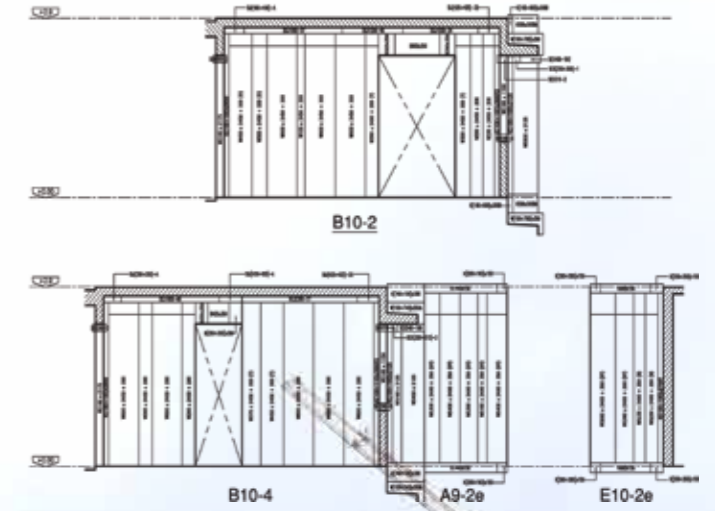
+ Plan



+ External Working Platform Section



+ Elevation Drawing



P J T Bundang Yongin U Tower
Builder POSCO E&C
Location Yongin, Korea
T y p e Multipurpose Building
S y s t e m K-AI formwork, KSB-H

U Tower_Yongin, Korea

Rigorous Supervision

We provide strict supervision service to enhance efficiency and safety



The most effective way of achieving high level of safety when using the formwork system is to have reliable supervision during erection and concrete pouring. Supervisors must assure that the formwork delivered is manufactured as per the client's design, so that no time is lost during its installation but under a safe working environment. Our experienced supervisors always check whether the formwork system is assembled and installed properly.

Many accidents could occur from handling the formwork materials when jobsite workers, particularly who are inexperienced, use machine and equipment or handle heavy and large materials without proper training.

Jobsite workers' safety is greatly dependant on proper information, instruction, training, and supervision.

Staff must be:

- Informed and trained, so that they understand the nature of risks to their health and safety, or that of other, from the work they do and the measures necessary to adequately control them.
- Supervised to ensure that they follow the instructions and training given to them.
- Involved in the health and safety management system and decision-making process.

Setting Process

Due to its easiness of assembly, our Kumkang Aluminum Formwork allows an average of 4~7 days cycle compared to 14~30 days cycle with the conventional method.

+1 Structural line and level check



+2 Installation of electrical, plumbing components and steel rebar. Installation of I/C and wall panels



+3 Installation of beam and SC panels



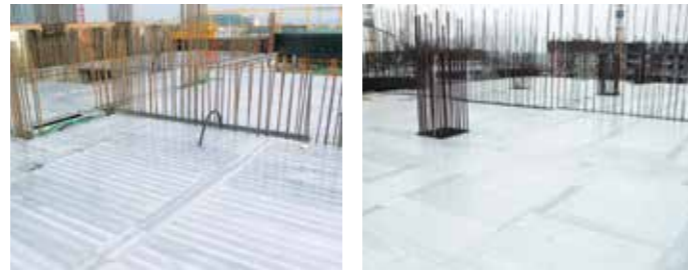
+4 Installation of staircase panels



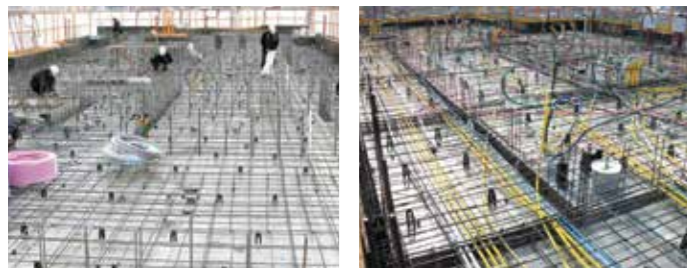
+5 Installation of slab panels



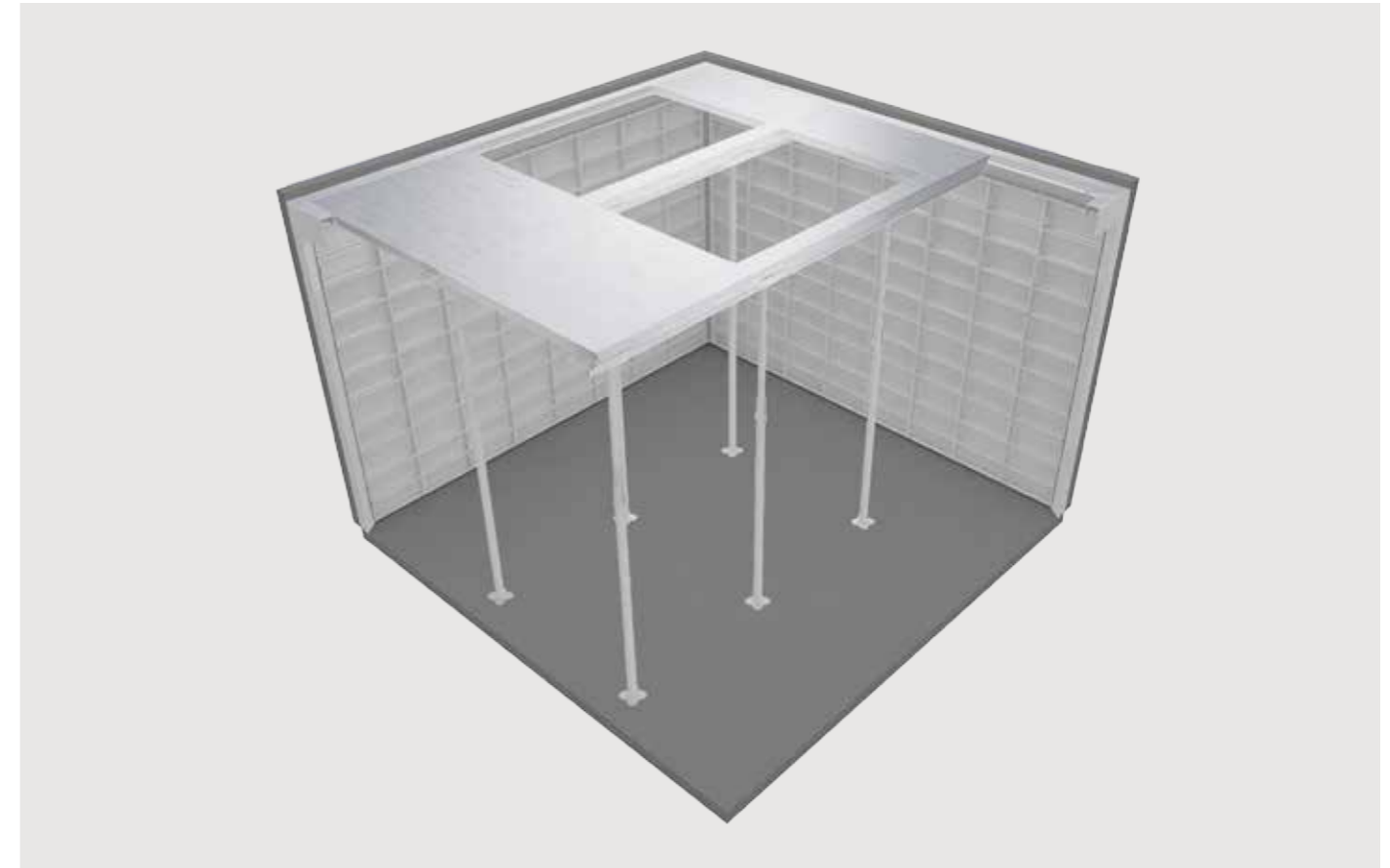
+6 Installation of slab panels



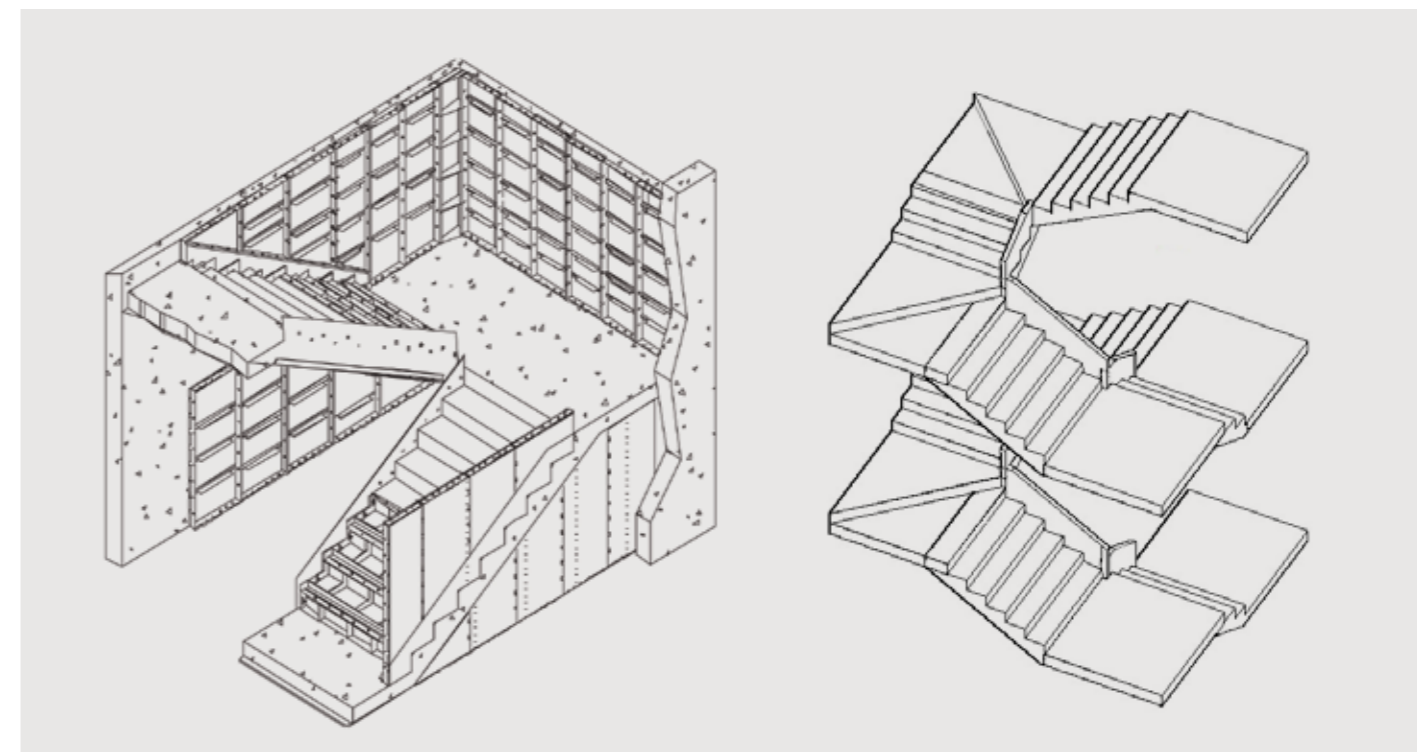
+7 Installation of electrical, plumbing components and steel rebar.



Sample mock-up of the Kumkang Aluminum Formwork

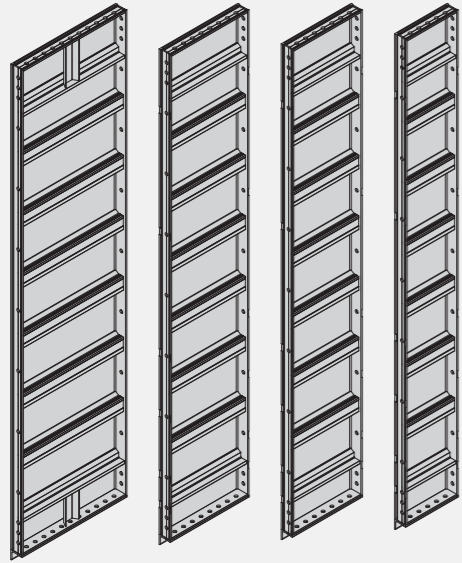


3D view of staircase



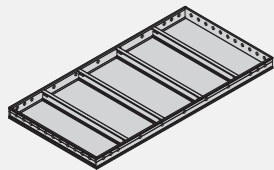
Article List

Wall panel



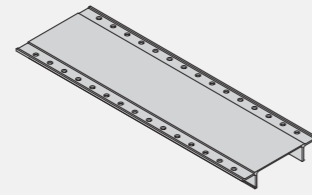
Components (mm)	Weight (kg)	Article No.
Wall standard panel 300 x 2400	15.8	31010000
Wall standard panel 400 x 2400	19.6	
Wall standard panel 450 x 2400	21.5	
Wall standard panel 600 x 2400	27.6	
Wall standard panel 300 x 2450	16.4	
Wall standard panel 400 x 2450	20.4	
Wall standard panel 450 x 2450	21.6	
Wall standard panel 600 x 2450	28.5	

Slab panel



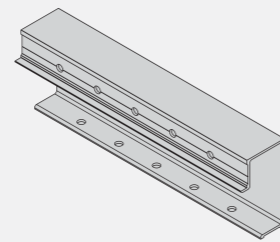
Components (mm)	Weight (kg)	Article No.
Slab panel 600 x 1200	13.5	35000000
Slab panel 450 x 1200	10.8	
Slab panel 400 x 1200	9.9	
Slab panel 300 x 1200	8.1	

Beam bottom slab panel



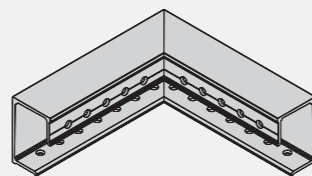
Components (mm)	Weight (kg)	Article No.
Beam bottom slab panel	38.4	35440000

Slab corner



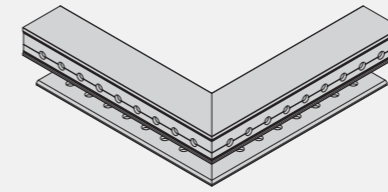
Components (mm)	Weight (kg)	Article No.
Slab corner	6.581	35100000

Slab incorner



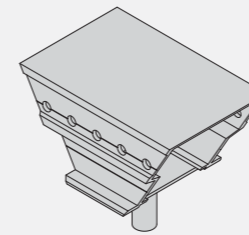
Components (mm)	Weight (kg)	Article No.
Slab incorner	-	35210000

Slab outcorner



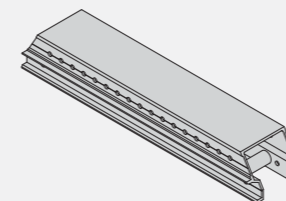
Components (mm)	Weight (kg)	Article No.
Slab outcorner	-	35220000

Prop head [PH]



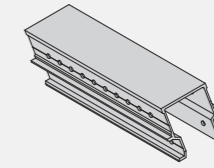
Components (mm)	Weight (kg)	Article No.
Prop head [PH] 150 x 300	2.5	35140000

Middle beam [MB]



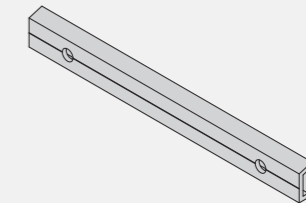
Components (mm)	Weight (kg)	Article No.
Middle beam [MB] 150 x 900	7.6	35160000
Middle beam [MB] 150 x 1050	8.7	

End beam [EB]



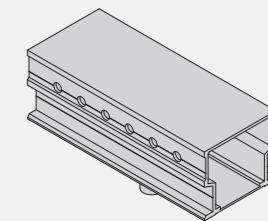
Components (mm)	Weight (kg)	Article No.
End beam [EB] 150 x 600	5	35180000
End beam [EB] 150 x 900	7.2	
End beam [EB] 150 x 1050	8.3	

Joint bar



Components (mm)	Weight (kg)	Article No.
Joint bar	0.67	35200000

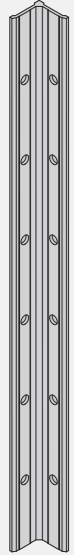
Special prop head



Components (mm)	Weight (kg)	Article No.
Special prop head	3.15	35150000

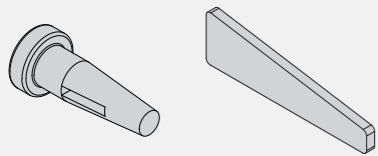
Article List

AL - (A/G) Release



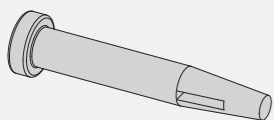
Components (mm)	Weight (kg)	Article No.
AL - (A/G) Release 63.5 x 63.5	1.931	31470000

Wedge & Round pin



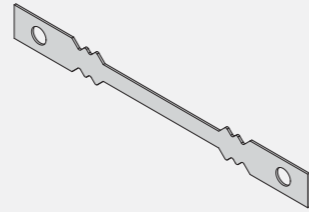
Components (mm)	Weight (kg)	Article No.
AL round pin	0.082	38000100
AL wedge pin	0.04	38000500

Long pin



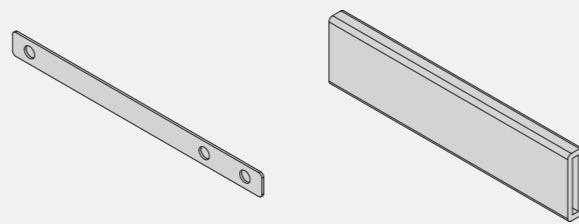
Components (mm)	Weight (kg)	Article No.
AL long pin	0.33	38000200

Embedded tie



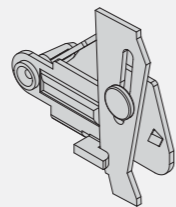
Components (mm)	Weight (kg)	Article No.
Al-embedded tie	0.15	38000700

Reuseable tie & PVC sleeve



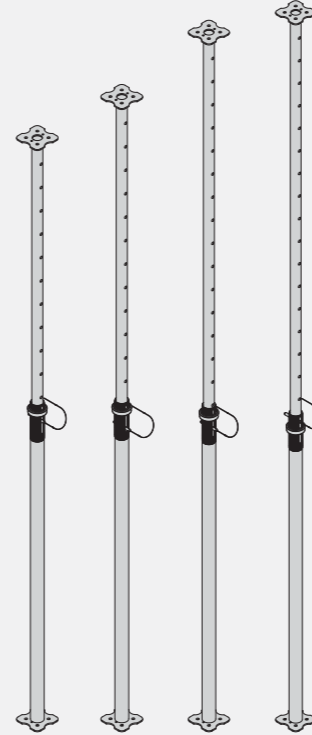
Components (mm)	Weight (kg)	Article No.
Al-reusable tie	0.125	38001110
AL PVC sleeve	0.76	38010600

Al-waler bracket



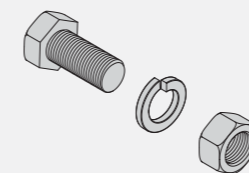
Components (mm)	Weight (kg)	Article No.
Al-waler bracket	0.67	38002800

Adjustable steel prop



Components (mm)	Weight (kg)	Article No.
V-1 1,800 ~ 3,200	10.9	110411
V-2 2,000 ~ 3,400	11.5	110425
V-3 2,400 ~ 3,800	12.5	110413
V-4 2,600 ~ 4,000	13.0	110414

Bolt, Nut & Washer



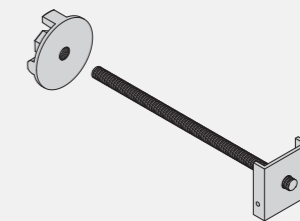
Components (mm)	Weight (kg)	Article No.
Bolt, Nut & Washer	0.11	38001800

Adjustable aluminum prop



Components (mm)	Weight (kg)	Article No.
Aluminum prop	17.6	35141000

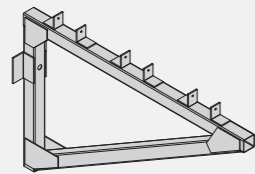
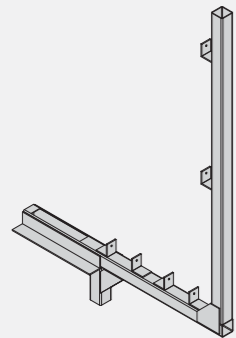
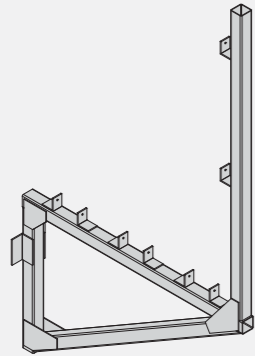
Al-tie rod (working platform)



Components (mm)	Weight (kg)	Article No.
Al-tie rod (working platform)	1.52	-

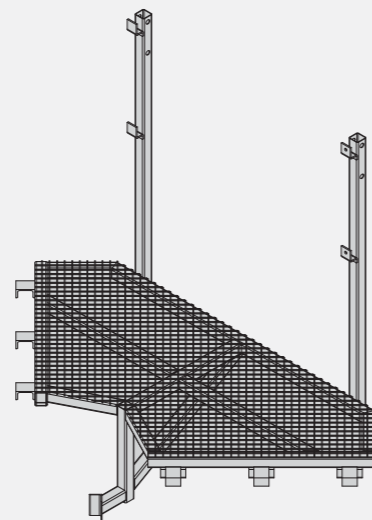
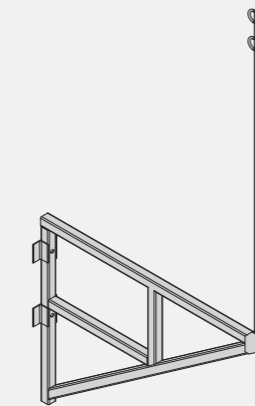
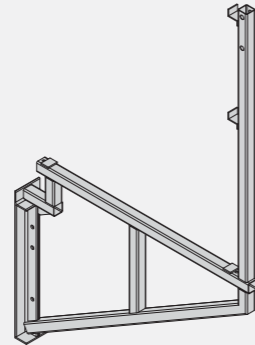
Article List

Working platform



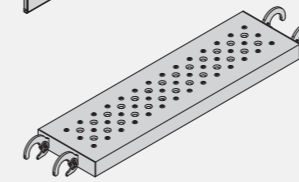
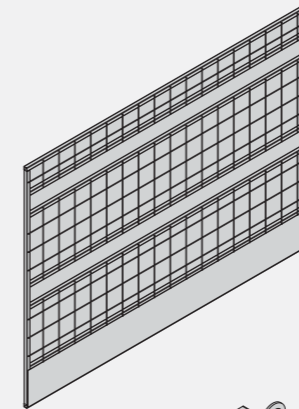
Components (mm)	Weight (kg)	Article No.
Working platform for wall	15.7	-
Working platform for slab	10.6	-
working platform for core	10.3	-

Working platform - Brazil type



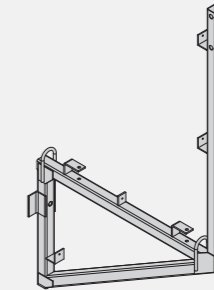
Components (mm)	Weight (kg)	Article No.
External working platform	19.4	-
Life line support	17.8	-
Corner mesh metal floor	36.3	-

Working platform - Brazil type



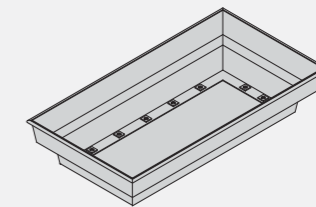
Components (mm)	Weight (kg)	Article No.
Metal grade with toe board 20cm	15.7	-
Non-skid floor	10.6	-
Post A type	5	-
Post B type	4.5	-

Working platform - India type



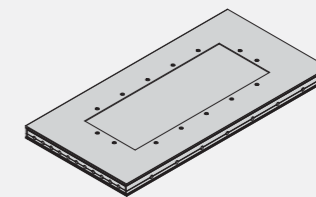
Components (mm)	Weight (kg)	Article No.
External working platform	17.81	-

Slab transfer box



Components (mm)	Weight (kg)	Article No.
Slab transfer box	24.19	34500000

Slab open panel



Components (mm)	Weight (kg)	Article No.
Slab open panel	10.93	35480000

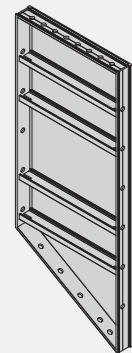
Article List

Staircase landing panel



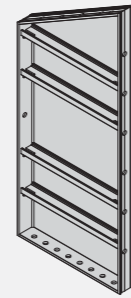
Components (mm)	Weight (kg)	Article No.
Staircase landing panel	11.43	36000000

Staircase wall panel(dw)



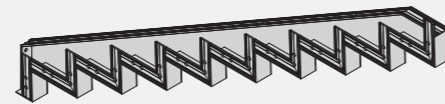
Components (mm)	Weight (kg)	Article No.
Staircase wall panel(dw)	3.37	36000000

Staircase wall panel(up)



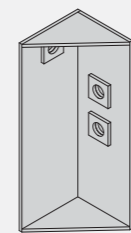
Components (mm)	Weight (kg)	Article No.
Staircase wall panel(up)	3.37	36000000

Gun panel



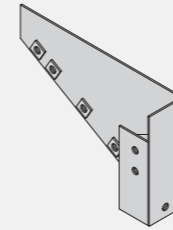
Components (mm)	Weight (kg)	Article No.
Gun panel	17.34	36510000

Staircase landing post panel 1



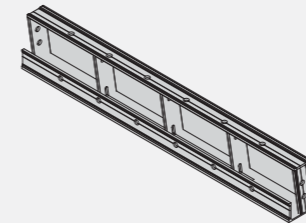
Components (mm)	Weight (kg)	Article No.
Staircase landing post panel 1	0.55	36510000

Staircase landing post panel 2



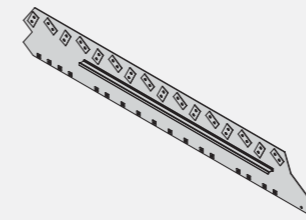
Components (mm)	Weight (kg)	Article No.
Staircase landing post panel 2	1.47	36510000

Staircase riser panel



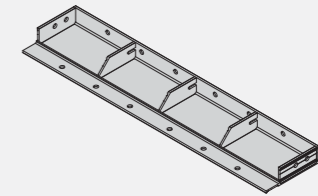
Components (mm)	Weight (kg)	Article No.
Staircase riser panel	6.24	36510000

Staircase side panel



Components (mm)	Weight (kg)	Article No.
Staircase side panel	14.9	36510000

Staircase step panel



Components (mm)	Weight (kg)	Article No.
Staircase step panel	5.05	36510000

Project References - Africa

+ 80 logements LPA, Oued-Rhiou - Algeria
- K-Al Form



+ 2,000 logements AADL, Chlef - Algeria
- K-Al Form



+ 100 logements LPA, Chelf - Algeria
- K-Al Form



+ 500 logements AADL, Mostaganem - Algeria
- K-Al Form



+ Villa Maya, Nairobi - Kenya
- K-Al Form



+ Kitisuru Gardens, Nairobi - Kenya
- K-Al Form



+ 50,000 housing project, Tripoli - Libya
- K-Al Form



+ JW Marriott Hotel, Tripoli - Libya
- K-Al Form



+ Villagio, Namanga - Kenya
- K-Al Form



+ Unity Gardens, Eldoret - Kenya
- K-Al Form



Project References - Malaysia

+ Gurney Paragon, Penang - Malaysia

- K-Al Form



+ KLCC Tower, Kuala Lumpur - Malaysia

- K-Al Form



+ Astaka, Johor Bahru - Malaysia

- K-Al Form



+ Universe Prime Condominium, Sabah - Malaysia

- K-Al Form



+ Oasis Damansara, Kuala Lumpur - Malaysia

- K-Al Form



+ The Troika, Kuala Lumpur - Malaysia

- K-Al Form



+ Fennel, Sentul - Malaysia

- K-Al Form



+ DNP Tower, Kuala Lumpur - Malaysia

- K-Al Form, KSB-C



+ Petronas Tower 3, Kuala Lumpur - Malaysia

- K-Al Form



+ Meridin, Johor Bahru - Malaysia

- K-Al Form



+ D'Rapport, Kuala Lumpur - Malaysia

- K-Al Form



+ ONE IFC Tower, Kuala Lumpur - Malaysia

- K-Al Form



Project References - Singapore

+ Riversails Residence - Singapore

- K-Al Form



+ Sky Habitat - Singapore

- K-Al Form



+ Marina Bay Financial Center R2 - Singapore

- K-Al Form



+ Bendemeer Condo - Singapore

- K-Al Form



+ Parkland Residence - Singapore

- K-Al Form



+ Foresque Residence - Singapore

- K-Al Form



+ Twin Waterfall - Singapore

- K-Al Form



+ Marina Bay Suites Project(BFC-R2) - Singapore

- K-Al Form



+ Minton Residence - Singapore

- K-Al Form



+ Viva Condominium - Singapore

- K-Al Form



+ Nus College - Singapore

- K-Al Form, Gangform, KGB-C, Balcony cage



+ Anderson 18 Condominium - Singapore

- K-Al Form



Project References - Vietnam

+ Keangnam Landmark Tower, Hanoi - Vietnam
- K-Al Form



+ Time City, Hanoi - Vietnam
- K-Al Form for 8 Blocks



+ Kumho Asiana Plaza, Ho Chi Minh - Vietnam
- K-Al Form



+ Masteri Complex, Ho Chi Minh - Vietnam
- K-Al Form for 5 Blocks



+ Vietinbank, Hanoi - Vietnam
- K-Al Form



+ Dolphin Plaza, Hanoi - Vietnam
- K-Al Form, KGB-H



+ Vista II, Ho Chi Minh - Vietnam
- K-Al Form for 4 Blocks



+ Ascent A, B, Ho Chi Minh - Vietnam
- K-Al Form, Steel Gang Form



+ Keangnam Landmark 72, Hanoi - Vietnam
- K-Al Form, Gang form, KSC-50



+ Discovery Complex, Hanoi - Vietnam
- K-Al Form



+ Green Valley, Ho Chi Minh - Vietnam
- K-Al Form



+ Vinhomes Tan Cang, Ho Chi Minh - Vietnam
- K-Al Form for 5 Blocks



Project References - India

+ Marathon Monte South, Mumbai - India

- K-Al Form



+ Lodha Clariant, Mumbai - India

- K-Al Form



+ Vaibhava, Bangalore - India

- K-Al Form



+ Prestige Falcon, Bangalore - India

- K-Al Form



+ Grand Arch, Delhi - India

- K-Al Form



+ Delhi one, Delhi - India

- K-Al Form, Gang form, KGB-H



+ Aratt Milano, Bangalore - India

- K-Al Form



+ Aratt Amora Villa, Bangalore - India

- K-Al Form



+ Nanded City, Pune - India

- K-Al Form



+ The Galleria, Bangalore - India

- K-Al Form



+ Megapolis, Pune - India

- K-Al Form



+ Oasis, Mumbai - India

- K-Al Form



Project References - Others

+ The Elements, Jakarta - Indonesia

- K-Al Form



+ Palawan Height, Puerto Princesa - Philippines

- K-Al Form



+ Residential apartment, Colombo - Sri Lanka

- K-Al Form



+ PTsubaki Hotel Guam - Guam

- K-Al Form



+ Royal Atlantis, Dubai - UAE

- K-Al Form



+ 5JJ, Dubai - UAE

- K-Al Form



+ Yangon Amara Hotel, Yangon - Myanmar

- K-Al Form



+ Phnom Penh Tower, Phnom Penh - Cambodia

- K-Al Form, KSB-C



+ Abraj Quartier, Doha - Qatar

- K-Al Form



+ Admir Residential, Jounieh - Lebanon

- K-Al Form



+ Shangri-La Hotel, Ulaanbaatar - Mongolia

- K-Al Form



+ Residencial Mirante, Suzano - Brazil

- K-Al Form





Headquarters

16, Hyoryeong-ro 60-gil, Seocho-gu, Seoul, Korea
Tel. 82-2-3415-4167 Fax. 82-2-3415-4165
kkkorea@kumkangkind.com

Kumkang Kind India

Office no.105, 1st floor, Sky Vista BLDG,
near Town Square Dorabjee,
Viman Nagar, Pune - 411 014
Maharashtra India
Tel. 91-20-6647-3800
kkindia@kumkangkind.com

Kumkang Kind Malaysia

B-9-01, Block B, Oasis Square
No.2, Jalan PJU 1A/7A
Ara Damansara 47301 Petaling Jaya
Selangor Darul Ehsan, Malaysia
Tel. 60-3-7831-0488 Fax. 60-3-7831-2588
kkmalaysia@kumkangkind.com

Kumkang Kind Vietnam

9th, Beautiful Saigon BLDG.,
02 Nguyen Khac Vien St, District 7,
Ho Chi Mihn City, Vietnam
Tel. 84-8-5413-6508 Fax. 84-8-5413-6507
kkvietnam@kumkangkind.com

Kumkang Kind East Africa

Office 15A, Mezzanine 2
The Mirage, Chiromo Rd
Westlands, Nairobi, Kenya
Tel. 254-2-0250-0882
kkafrica@kumkangkind.com

Kumkang Kind Indonesia

Gedung Wisma Slipi Unit 801,
Jl..Let. Jend. S. Parman Kav. 12
Jakarta, Indonesia
Tel. 62-812-9781-5600
kkindonesia@kumkangkind.com

Kumkang Kind America

1215 W. Imperial HWY., Ste 216 Brea, CA 92812 USA
Tel. 1-714-278-9089 Fax. 1-714-494-8032